

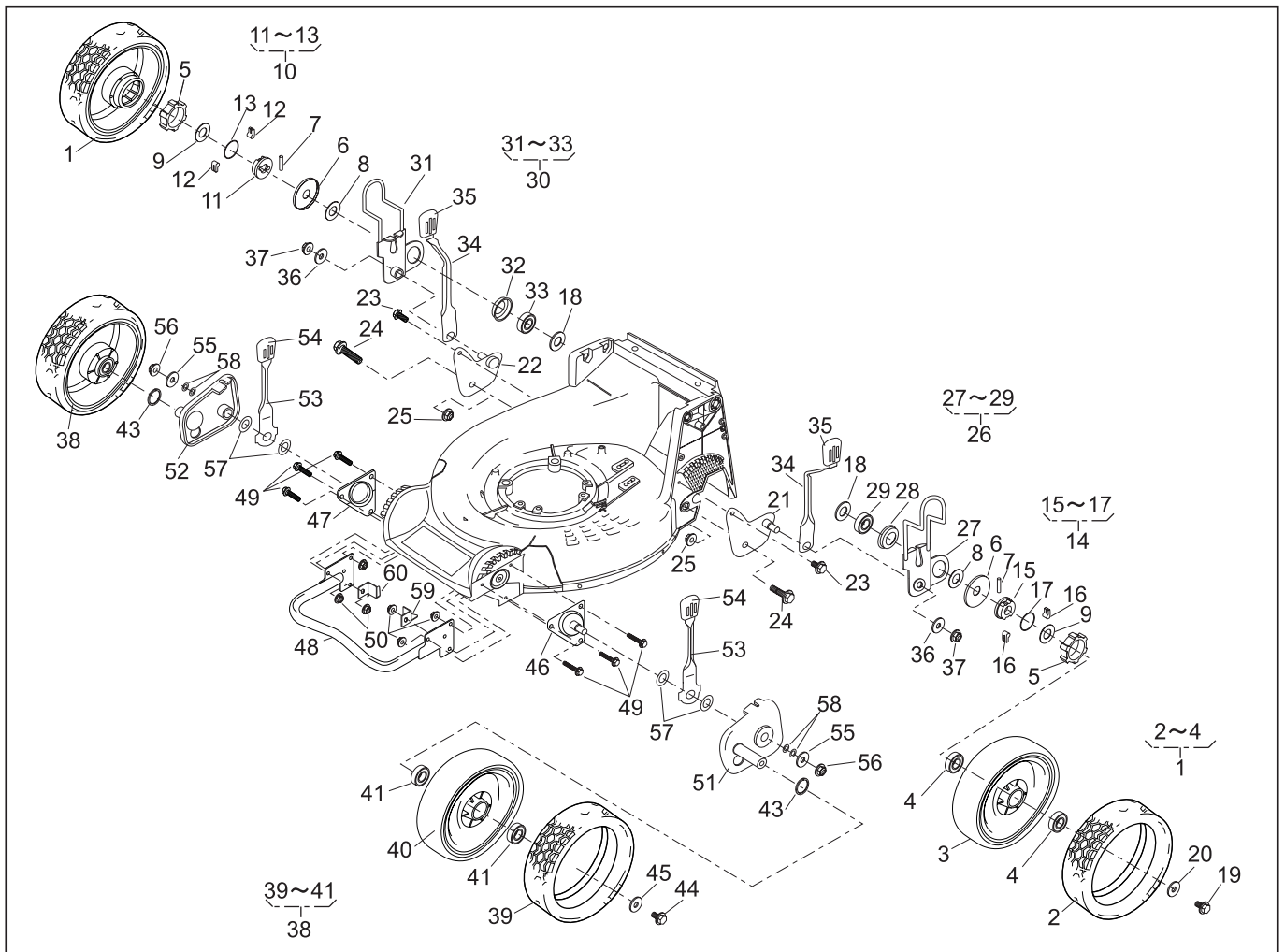


TOSAERBA SARP

SLM-5360HXA-PRO 2^a serie

dalla matricola n° 5210001

ESPLOSO RICAMBI

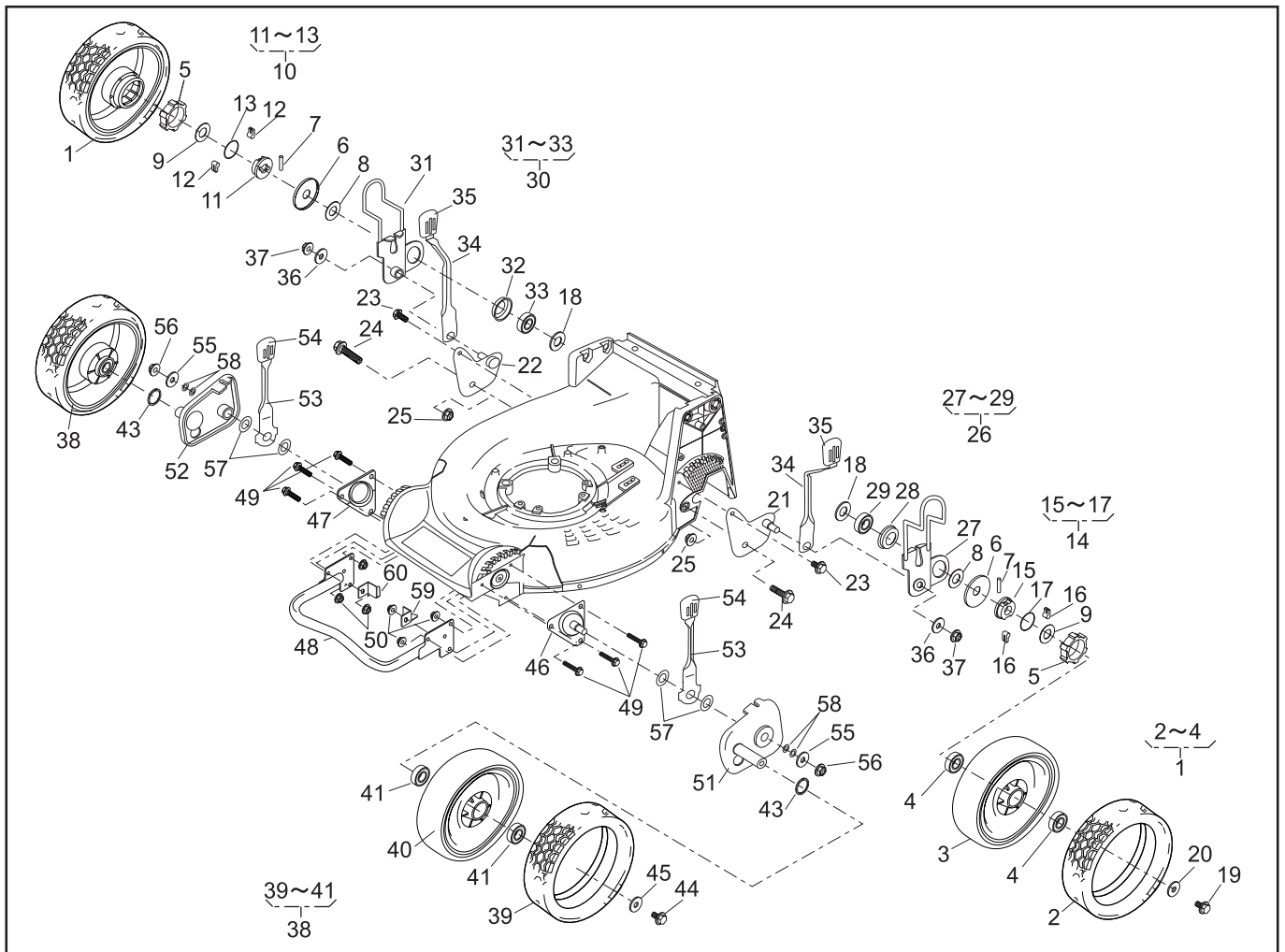


PARTS LIST

P/L No. 46014-504-00

NOTE

REF. No.	PARTS No.	PARTS NAME	9.6"AI-WHEEL			1/2	Dec. 25, 2006
			Q'TY INCLUDING	PRICE()	RECOMM.(%) Lot.100	REMARKS	
1	71041 144	WHEEL ASSY(9.6"A.W.)	2				
2	91086 116	TIRE	2				
3		WHEEL	2				
4	916B 6002	BEARING	4				
5	11086 119	STOPPER	2				
6	61003 112	THRUST PLATE	2				
7	31034 137	PIN	2				
8	68036 270	WASHER	2				
9	68036 146	WASHER	2				
10	71158 101	RATCHET ASSY(R)	1				
11	11102 138	HOLDER	1				
12	31034 170	PIN	2				
13	68013 266	SPRING	1				
14	71158 102	RATCHET ASSY(L)	1				
15	11102 138	HOLDER	1				
16	31034 170	PIN	2				
17	68013 266	SPRING	1				
18	68036 275	WASHER	2				
19	31057 181	HEXAGON BOLT	2				
20	68036 101	WASHER	2				
21	11006 151	STAY C.P.(RL)	1				
22	11006 152	STAY C.P.(RR)	1				
23	342L 0612	FLANGE BOLT TAPPING	2				
24	31057 255	HEXAGON BOLT	2				
25	584L 0800	U-FLANGE NUT	2				
26	71122 110	ADJUSTER ASSY(L)	1				
27	11142 125	ADJUSTER(RL)	1				
28	11102 228	HOLDER	1				
29	916B 6202	BEARING	1				
30	71122 111	ADJUSTER ASSY(R)	1				



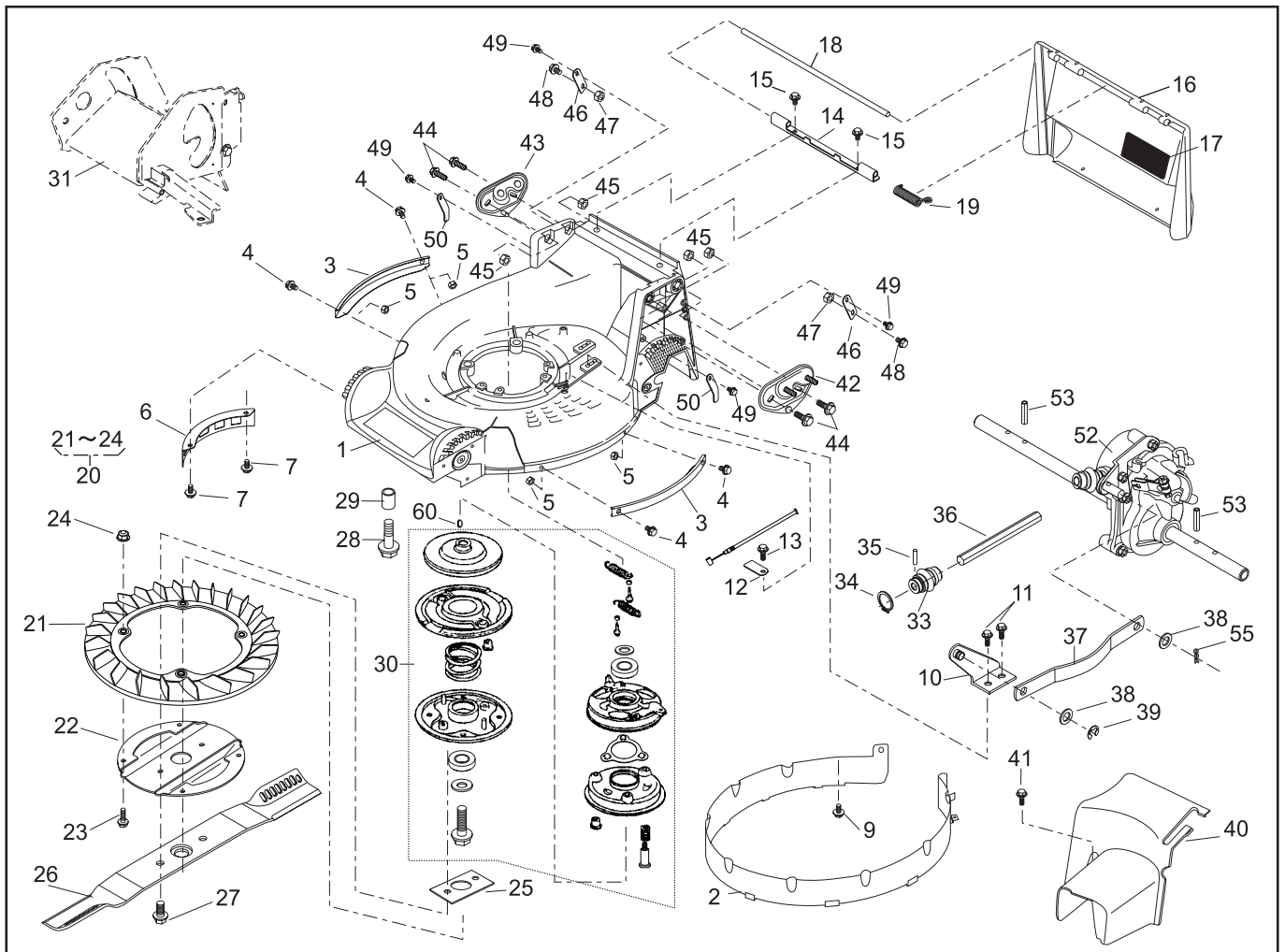
PARTS LIST

P/L No. 46014-504-00

NOTE

REF. No.	PARTS No.	PARTS NAME	9.6"AI-WHEEL		PRICE()	2/2		REMARKS
			Q'TY	INCLUDING		RECOMM.(%)	Lot.100	
31	11142 126	ADJUSTER(RR)	1					
32	11102 228	HOLDER	1					
33	916B 6202	BEARING	1					
34	11150 105 09	ADJUST LEVER	2					
35	36061 121	KNOB	2					
36	613L 0800	WASHER	2					
37	569L 0800	FLANGE NYLON NUT	2					
38	71041 145	WHEEL ASSY(9.6"A.W.)	2					
39	91086 116	TIRE	2					
40		WHEEL	2					
41	916B 6002	BEARING	4					
42								
43	51113 119	RING	2					
44	31057 181	HEXAGON BOLT	2					
45	68036 101	WASHER	2					
46	11006 153	STAY C.P.(FL)	1					
47	11006 154	STAY C.P.(FR)	1					
48	11153 112	BUMPER	1					
49	335L 0625	FLANGE BOLT	6					
50	569L 0600	FLANGE NYLON NUT	6					
51	11142 127	ADJUSTER(FL)	1					
52	11142 128	ADJUSTER(FR)	1					
53	11150 109 09	ADJUST LEVER	2					
54	36061 121	KNOB	2					
55	68036 101	WASHER	2					
56	584L 0800	U-FLANGE NUT	2					
57	68013 393	SPRING	4					
58	68007 105	SHIM	0~4					
59	11113 418	STAY(L)	1					
60	11113 417	STAY(R)	1					

Dec. 25, 2006

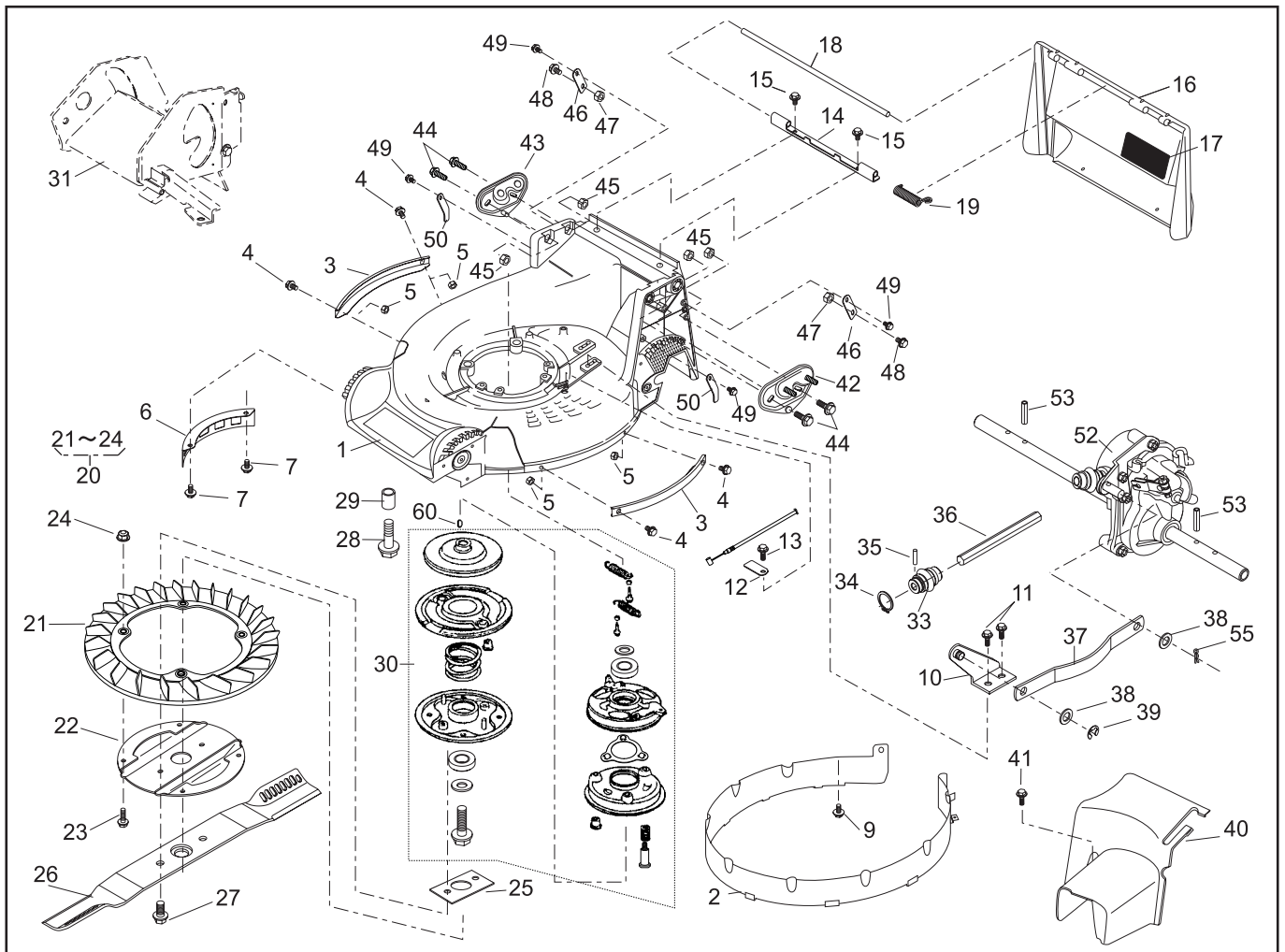


PARTS LIST

P/L No. 46014-538-00

NOTE

REF. No.	PARTS No.	PARTS NAME	GARSS-CUTTING-PRO		1/2	REMARKS
			Q'TY INCLUDING	PRICE()	RECOMM.(%) Lot.100	
1	51043 151 42	HOUSING	1			
2	36068 204	GUARD	1			
3	51090 117 09	PROTECTOR	2			
4	335L 0616	FLANGE BOLT	4			
5	512L 0600	HEXAGON NUT	4			
6	36065 180	COVER	1			
7	342L 0612	FLANGE BOLT TAPPING	2			
8						
9	342L 0612	FLANGE BOLT TAPPING	1			
10	11006 155	STAY C.P.	1			
11	342L 0612	FLANGE BOLT TAPPING	2			
12	11113 407	STAY	1			
13	342L 0612	FLANGE BOLT TAPPING	1			
14	11113 292	STAY	1			
15	342L 0612	FLANGE BOLT TAPPING	2			
16	36068 196 46	GUARD	1			
17	36080 149	RUBBER SHEET	1			
18	64014 324	SHAFT	1			
19	68013 336	SPRING	1			
20	71082 111	FAN ASSY	1			
21	51125 103	FAN	1			
22	11102 151	HOLDER	1			
23	31062 169	PRE-COAT LOCK BOLT	4			
24	579L 0600	FLANGE NUT	4			
25	61024 208	SPACER	1			
26	91014 188	BLADE	1			
27	31057 197	HEXAGON BOLT	2			
28	31057 243	HEXAGON BOLT	4			
29	61024 142	SPACER	3			
30	71067 106	BRAKE ASSY	1			

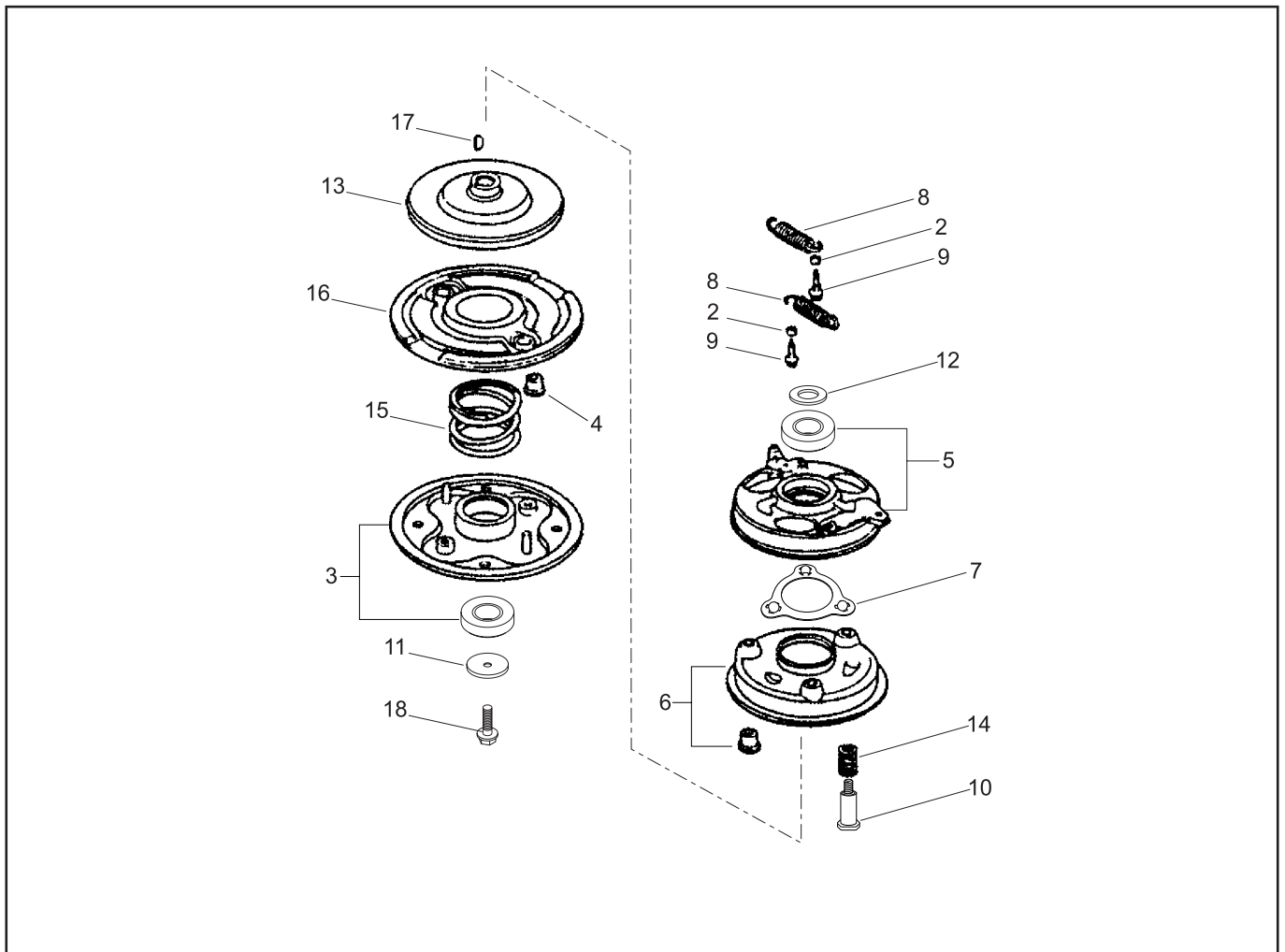


PARTS LIST

P/L No. 49014-538-00

NOTE

REF. No.	PARTS No.	PARTS NAME	GARSS-CUTTING-PRO		2/2		Dec. 25, 2006	
			Q'TY INCLUDING	PRICE()	RECOMM.(%) Lot.100	REMARKS		
31		COVER UNIT (Ref. P/L No. 46012-550-**)						
32								
33	91097 101	UNIVERSAL JOINT	1					
34	812V 2000	C-SNAP RING FOR SHAFT	1					
35	717B 0418	PARALLEL PIN	1					
36	64014 339	SHAFT	1					
37	91049 129	CONNECTOR	1					
38	68036 280	WASHER	2					
39	816V 0800	E-SNAP RING	1					
40	36065 438	COVER	1					
41	342L 0616	FLANGE BOLT TAPPING	1					
42	51116 149	HANDLE BRACKET(L)	1					
43	51116 150	HANDLE BRACKET(R)	1					
44	31057 255	HEXAGON BOLT	4					
45	512L 0800	HEXAGON NUT	4					
46	11113 408	STAY	2					
47	512L 0800	HEXAGON NUT	2					
48	31057 181	HEXAGON BOLT	2					
49	342L 0612	FLANGE BOLT TAPPING	4					
50	11113 415	STAY	2					
51								
52	71008 377	GEAR CASE ASSY	1					
53	711V 0522	SPRING PIN	2					
54								
55	733L 1000	SNAP PIN	1					
56								
57								
58								
59	122039	ENGINE:HONDA GXV160H2-SFL1-R280	1					
60		WOOD RUFF KEY	1					

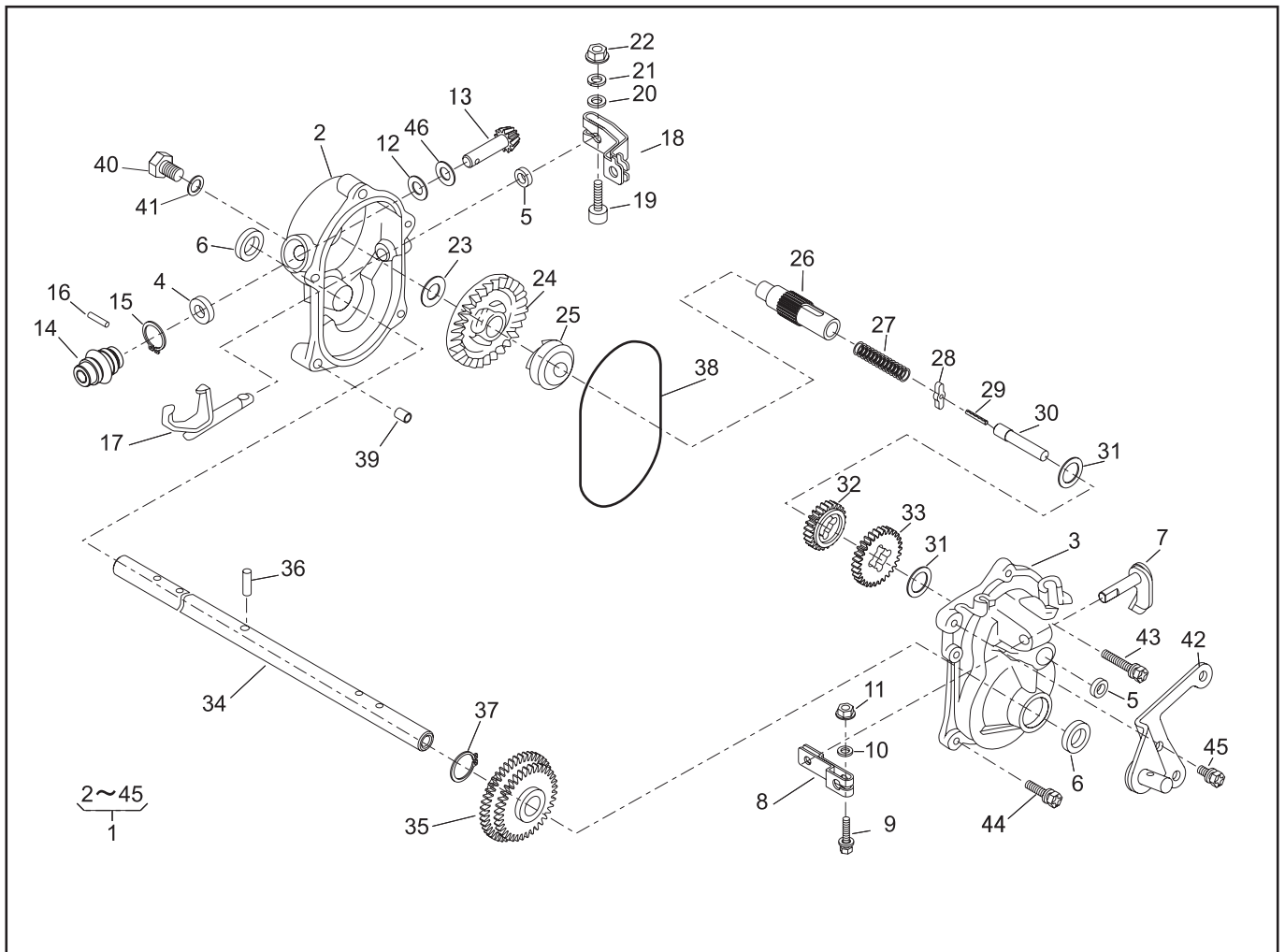


PARTS LIST

BRAKE ASSY (71067-106)

P/L No. 46014-266-02

REF. No.	PARTS No.	PARTS NAME	BBC		1/1	Feb.09,2005
			Q'TY INCLUDING	PRICE()	RECOMM.(%) Lot.100	REMARKS
1	71067 106	BRAKE ASSY	1			
2	19512 883 000	FAN COLLAR	2			
3	72600 VA4 010	HOLDER ASSY	1			
4	72613 VA4 000	BUSH, BLADE HOLDER	2			
5	75090 VA4 030	CONTROL ASSY	1			
6	75100 VA4 010	BRAKE C.P.	1			
7	75110 VA4 000	BALL RETAINER C.P.	1			
8	75182 VA3 J00	SPRING, CLUTCH RETURN	2			
9	90014 952 000	FLANGE BOLT	2			6 x 14
10	90021 VA4 000	BOLT, SPECIAL	3			6 mm
11	90409 952 000	WASHER	1			10 mm
12	90501 952 010	THRUST WASHER	1			
13	75130 VA4 000	BRAKE DISK	1			
14	75132 VA4 000	SPRING, BRAKE HOLDER	3			
15	75183 VA3 J00	SPRING, CLUTCH	1			
16	75150 VA3 J01	DRIVEN DISK C.P.	1			
17	94401 16150	WOODRUFF KEY	1			
18	90105 960 003	BOLT (10x25)	1			
19						
20						
21						
22						
23						
24						
25						
26						
27						
28						

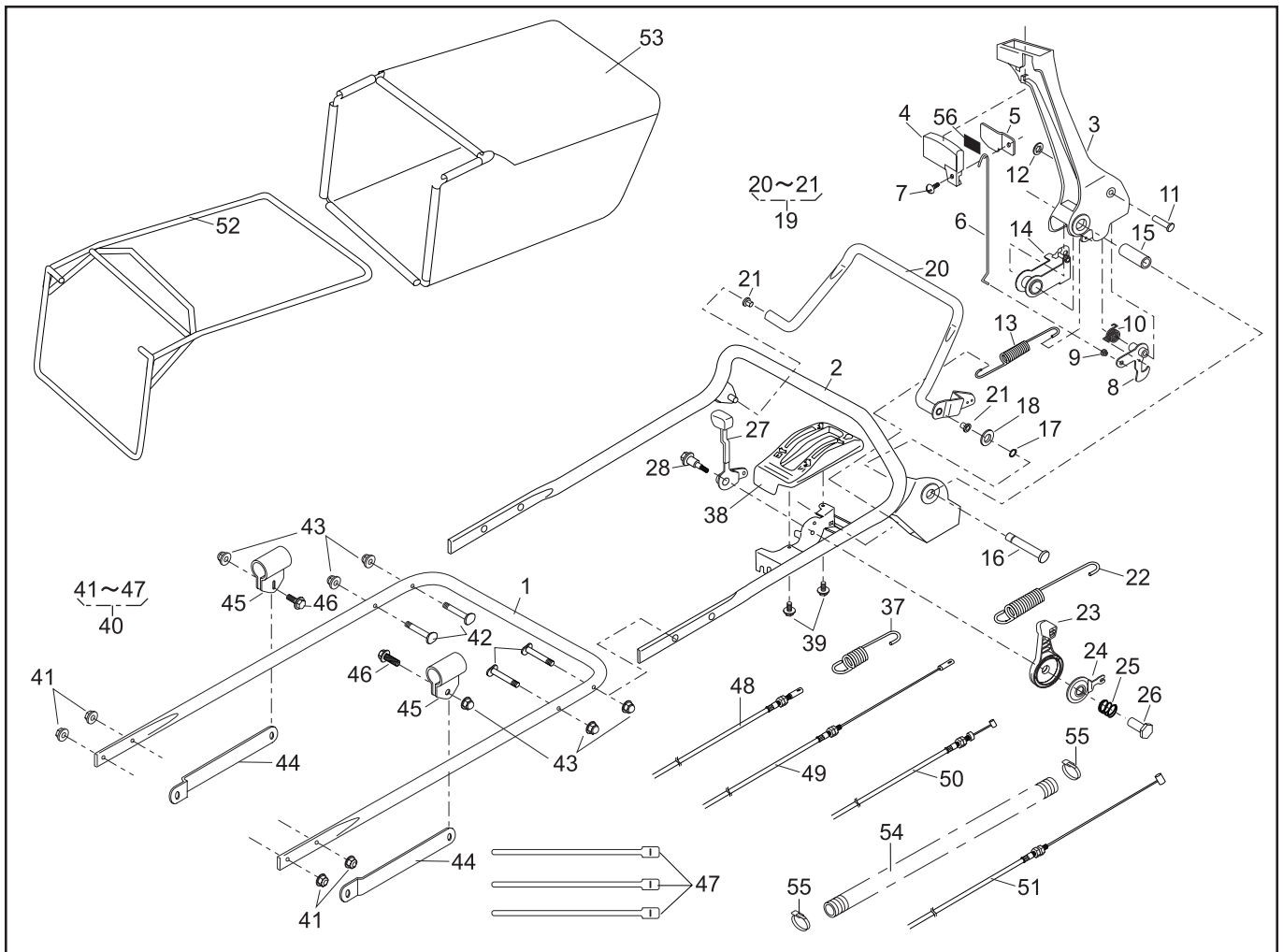


PARTS LIST

GEAR CASE ASSY (71008-377)

P/L No. 46014-264-03

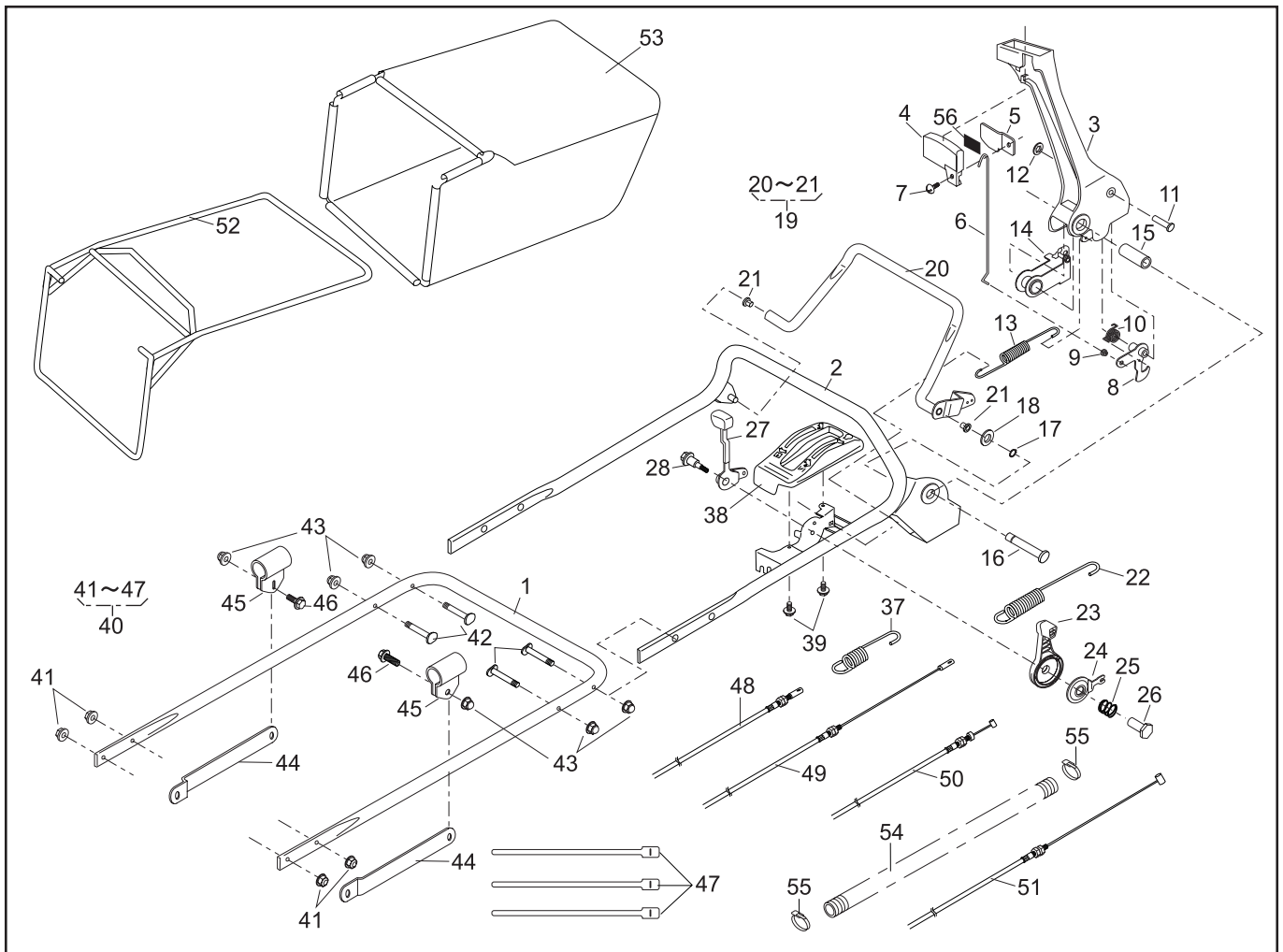
REF. No.	PARTS No.		PARTS NAME	GEAR CASE			1/2		RECOMM.(%) Lot.100	REMARKS
				Q'TY	PRICE()					
				INCLUDING						
1	71008	377	GEAR CASE ASSY	1					-	
2	51001	195	GEAR CASE	1					3	
3	51001	196	GEAR CASE	1					3	
4	61002	161	OIL SEAL	1					5	
5	61002	162	OIL SEAL	2					5	
6	61002	163	OIL SEAL	2					5	
7	64024	104	SHIFTER SHAFT	1					3	
8	11104	119	ARM	1					3	
9	320L	0525	(+)HEXAGON BOLT(W/PW)	1					3	
10	611L	0500	PLAIN WASHER	1					3	
11	571L	0500	FLANGE NUT	1					3	
12	61003	109	THRUST PLATE	1					5	
13	78003	130	PINION	1					3	
14	91097	101	UNIVERSAL JOINT	1					3	
15	812V	2000	C-SNAP RING		1				1	
16	717B	0418	PARALLEL PIN		1				3	
17	11097	106	SHIFTER FORK	1					3	
18	11104	137	ARM	1					3	
19	419U	0630	SOCKET SCREW	1					3	
20	611L	0600	PLAIN WASHER	1					3	
21	661L	0600	SPRING LOCK WASHER	1					3	
22	512L	0600	HEXAGON NUT	1					3	
23	61024	117	SPACER	1					5	
24	78001	162	BEVEL GEAR	1					3	
25	11129	107	CLUTCH	1					3	
26	64014	236	SHAFT	1					3	
27	68013	262	SPRING	1					3	



PARTS LIST

P/L No. 46014-475-00

REF. No.	PARTS No.	PARTS NAME	HANDLE-Pro		1/2	REMARKS
			Q'TY INCLUDING	PRICE()	RECOMM.(%) Lot.100	
1	51027 249	HANDLE	1			
2	51027 250	HANDLE	1			
3	11095 172	LEVER(BBC)	1			
4	36110 102	BUTTON	1			
5	11049 109	SLIDE PLATE	1			
6	64014 336	SHAFT	1			
7	376N 0612	(+)TRUSS SCREW	1			
8	71203 135	ARM C.P.	1			
9	76007 183	BUSH	1			
10	68013 371	SPRING	1			
11	31056 127	GIB-HEADED PIN	1			
12	576V 0600	PUSH NUT	1			
13	68013 392	SPRING	1			
14	11109 111	LINK	1			
15	61023 190	SLEEVE	1			
16	64014 337	SHAFT	1			
17	812V 0800	C-SNAP RING	1			
18	613L 0800	PLAIN WASHER	1			
19	71161 114 09	LEVER ASS'Y	1			
20		LEVER		1		
21	76007 131	BUSH		2		
22	68013 391	SPRING	1			
23	91010 169	THROTTLE LEVER(GXV120/GXV160)	1			
24	61003 113	THRUST PLATE	1			
25	68013 356	SPRING	1			
26	31058 168	HEXAGON NUT	1			
27	11095 117	LEVER	1			
28	31062 109	PRE-COAT LOCK BOLT	1			
29						
30						



PARTS LIST

P/L No. 46014-475-00

REF. No.	PARTS No.	PARTS NAME	HANDLE-Pro		2/2	Dec. 25, 2006
			Q'TY INCLUDING	PRICE()	RECOMM.(%) Lot.100	REMARKS
31						
32						
33						
34						
35						
36						
37	68013 161	SPRING	1			
38	71900 796	COVER ASS'Y	1			
39	470L 0514	(+)TAPPING SCREW	2			
40	71900 845	BOLT SET	1			
41	569L 0800	FLANGE NYLON NUT	4			
42	31057 256	HEXAGON BOLT	4			
43	583L 0800	FLANGE CAP NUT	6			
44	71900 846	BAR SET	1			
45	11012 132	HANGER BAND	2			
46	31057 181	HEXAGON BOLT	2			
47	68028 118	WIRE BAND	3			
48	91003 125	CONTROL CABLE	1			
49	91003 170	CONTROL CABLE	1			
50	91001 329	THROTTLE WIRE(GXV120/GXV160)	1			
51	91003 169	CONTROL CABLE(BBC)	1			
52	11062 178	FRAME C.P.	1			
53	36098 136	GRASS BAG C.P.(Black)	1			
54	41003 201	TUBE (15.6x800L)	1			
55	68028 119	WIRE BAND	2			
56	36080 156	RUBBER SHEET	1			
57						
58						
59						
60						